



SOTEAG

Shetland Oil Terminal Environmental
Advisory Group

SOTEAG Data

Summary document

March 2025

The information provided within this document is a summary of data held within the SOTEAG databases.

The data can be made available to commercial enterprises for a fee, following the completion of a data sharing agreement.

We recommend that anyone contemplating paying to access the databases looks at the reports (available from the website) before hand to ensure the information contained will meet expectations.

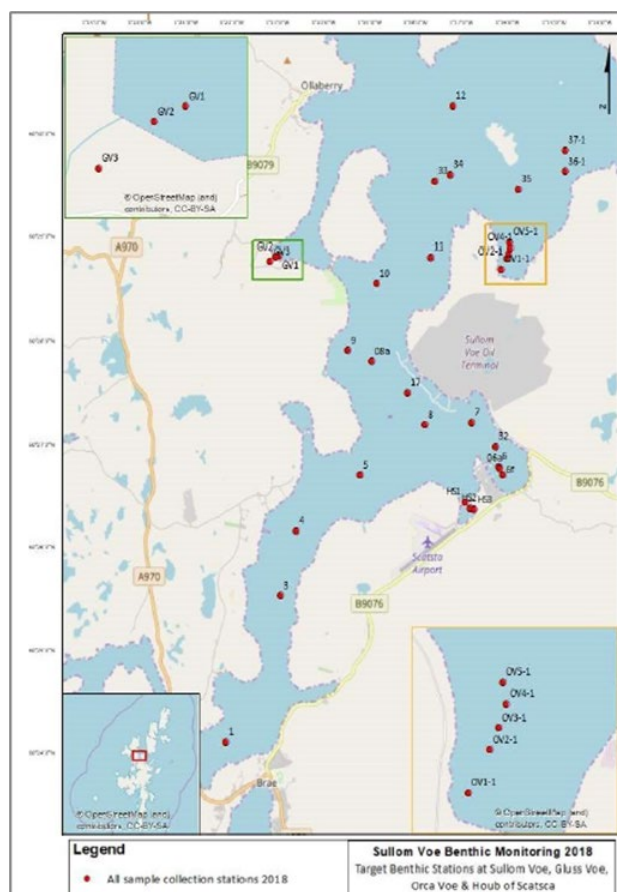
Rocky Shore program

| | |
|----------------------------|---|
| Number of sites: | 15, plus 10 reference sites (25 total). |
| Date range: | 1976-2023 (missing 1982-1983). |
| Update frequency: | Annual: previous years data available from April the following year (i.e. 2023 data will be available from April 1st 2024). |
| Variables measured: | In situ species number and abundance (or % cover) (fauna and lichens and algae). |
| Sampling type: | Transect - five major shore zones of upper shore (Station A), upper middle shore (Station B), middle shore (Station C), lower middle shore (Station D) and lower shore (Station E) as defined by their relative height above chart datum and their assemblages of plants and animals. |



Chemistry and Macrobenthic program

| | |
|----------------------------|--|
| Number of sites: | 31 stations (6 soft shore stations & 25 subtidal sediment stations by Day grab and intertidal handheld core). |
| Date range: | 1978-2021 (with varying frequency). |
| Update frequency: | Currently once every 3 years but this has changed over the course of the sampling period. Previous years data available from April the following year (i.e. 2023 data will be available from April 1st, 2024). |
| Variables measured: | Particle size, organic matter, sediment hydrocarbon, sediment major and trace elements, infaunal species number and infaunal species abundance. |
| Sampling type: | Day grabs and handheld cores. 0.1m ² of sediment to a depth of approximately 10cm. Infaunal taxonomy: material washed a 1mm-mesh sieve to extract the low-density components (crustaceans and polychaetes) and combined with the floating material. Infaunal analysis adheres to NMBAQC processing and identification guidelines. |



Seabird program

| | |
|----------------------------|--|
| Number of sites: | 72 survey sites (maximum but varies between species and surveys - see annual reports). |
| Date range: | Seabird monitoring programme began in 1976 (dataset durations vary between species and surveys - see annual reports). |
| Update frequency: | Annual: previous years data available from April the following year (i.e. 2023 data will be available from April 1st, 2024). |
| Variables measured: | Breeding and wintering population size, breeding success, chick diet (varies between species - see annual reports). |
| Sampling type: | Extensive sample of seabird breeding colonies and wintering areas throughout Shetland (varies between species and surveys - see annual reports). |

